

Power BI, Advance Excel & Microsoft SQL Server for Agribusiness Management



Harness the Power of Technology
to Transform Agribusiness
Management!



29th March & 30th March
5th April & 6th April

Only 599 /-



Connect with Us

Booking Seat

<https://forms.gle/9nHD863>
WokgiAmyU6



+91 7499177133
+91 7879221505



www.agmatrix.in



[agmatrix.careers](https://www.instagram.com/agmatrix.careers)

Tech-Driven Management for Agribusiness

Transform Your Future with Cutting-Edge Skills!

This program equips you with industry-relevant knowledge and hands-on expertise in advanced technologies like AI, robotics, and data analytics. Join now to become a leader in agribusiness innovation and unlock endless career opportunities!

WHO WE ARE

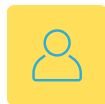
AgMatrix is a fast growing Global education & Training and placement solution provider, focussing on holistic knowledge and skill interventions that impact livelihoods. It is leading Training Platform which offers specialized training programs in food and agribusiness value chains through a blend of face-to-face workshops and digital engagement sessions, tailored for youth in educational Institutions, NGOs, and Companies Pan India. These capacity building programs follow the process where attitudes, knowledge and skills are challenged, unpacked and activated towards change process

OBJECTIVES



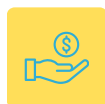
Data Management and Integration:

Gain expertise in managing, querying, and integrating data using MS SQL Server, Advanced Excel, and Power BI for seamless analysis and reporting



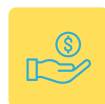
Data Analysis and Visualization:

Develop skills to analyze complex datasets and create interactive, dynamic dashboards in Power BI and Excel to support data-driven decision-making.



Automation and Efficiency:

Learn to automate workflows and optimize processes using advanced Excel functions, macros, SQL queries, and Power BI tools to enhance productivity.



Business Insights and Decision Support:

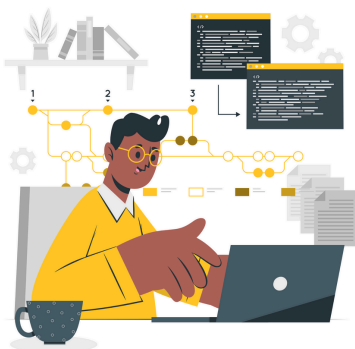
Acquire the ability to extract actionable business insights and design decision support systems to address real-world challenges across industries.



01.

Mastering Power BI for Dynamic Insights

Transform raw data into meaningful insights with Power BI's powerful dashboards and interactive visuals. Learn to connect data sources, design impactful reports, and make data-driven decisions in real time

**02.**

Excel Beyond Limits

Master advanced formulas, pivot tables, and VBA macros to analyze and automate data like a pro. This module empowers you to simplify complex tasks and create insights with unmatched efficiency

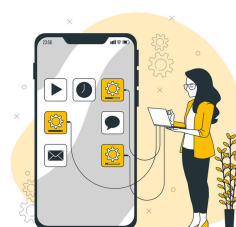
03.

Building Databases with MS SQL Server

Learn to manage, query, and optimize relational databases for seamless data handling

Integrating all Seamless Analytics

Combine the strengths of Power BI, Excel, and SQL Server to create and build a unified ecosystem that simplifies workflows and delivers real-time, actionable insights.

04.

Unlock the Power of Data for Agribusiness Growth

This course bridges the gap between agriculture and technology by equipping students with essential skills in Power BI, Advanced Excel, and MS SQL Server. It empowers future agribusiness leaders to leverage data for solving real-world challenges, optimizing operations, and driving sustainable growth.

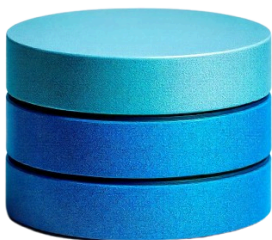


Power BI

MS Power BI



MS Excel



MS SQL SERVER

WHY THIS COURSE IS ESSENTIAL FOR AGRIBUSINESS STUDENTS:

Learn to integrate cutting-edge digital tools into farm and agribusiness operations with a focus on agri-tech solutions. Gain practical insights through real-life case studies, covering scenarios like precision farming and value chain management. This course equips you with job-ready skills for roles in agribusiness consulting, farm data analytics, supply chain management, and beyond.

KEY BENEFITS FOR AGRIBUSINESS



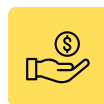
Data-Driven Decision-Making:

Improve profitability by analyzing soil quality, weather conditions, and crop performance and Learn to incorporate digital tools into farm and agribusiness operations



Supply Chain Optimization

Use data insights to streamline logistics, reduce waste, and connect with markets efficiently.



Financial Efficiency

Develop accurate financial models for farm budgeting and investment planning.



Resource Management

Track inputs like seeds, fertilizers, and water usage to enhance productivity.



MODULES & SCHEDULE

1.

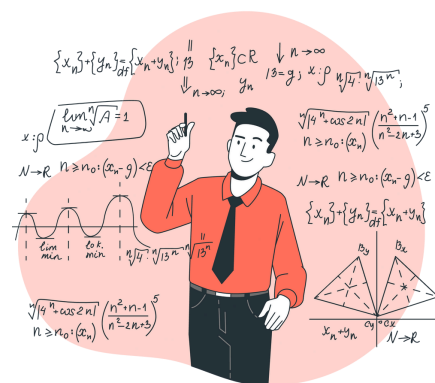
Advanced Excel for Data Management and Analysis

Tentative Duration: 3 Hours

Date : 29/03/2025

Content:

- Introduction to Advanced Excel: Overview of advanced features and their importance in agribusiness management.
- Data Cleaning and Formatting: Techniques such as Text to Columns, Flash Fill, removing duplicates, and handling blank cells.
- Conditional Formatting: Visualizing data patterns effectively.
- Hands-On Activity: Cleaning and formatting agribusiness sales data using Excel tools.



2.

Power BI for Data Visualization and DAX Basics

Tentative Duration: 3 Hours

Date : 30/03/2025

Content:

- PivotTables and PivotCharts: Creating, customizing, and visualizing agribusiness data.
- Excel Dashboards: Linking data sources and designing dynamic dashboards with slicers.
- What-If Analysis and Solver: Scenario modeling, optimization, and data validation for controlled inputs.
- Introduction to DAX: Creating calculated columns, measures, and using time intelligence functions like YTD and QTD.
- Hands-On Activity: Building a dashboard using agribusiness sales data



CONTACT US



+91 7499177133
+91 7879221505



www.agmatrix.in



MODULES & SCHEDULE

3.

Introduction to MS SQL Server for Data Management

Tentative Duration: 3 Hours

Date : 05/04/2025

Content

- Introduction to Relational Databases and SQL: Basics of tables, keys, and relationships in a database.
- Basic SQL Queries: SELECT, WHERE, GROUP BY, and aggregate functions like COUNT and SUM.
- Joins and Subqueries: Writing complex queries using INNER JOIN, LEFT JOIN, and subqueries.
- Hands-On Activity: Querying crop production and sales data using SQL.



4.

Integrated Data Analysis and Final Project

Tentative Duration: 3 Hours

Date : 06/04/2025

Content:

- Connecting SQL & Power BI for seamless data integration and advanced reporting.
- Building an end-to-end agribusiness dashboard for strategic decision-making.
- Developing a comprehensive business report through a final project.
- Presenting project insights and receiving constructive feedback.



 **Become Certified**
Agribusiness Management expert



CONTACT US



+91 7499177133
+91 7879221505



www.agmatrix.in



AgMatrix™
Empowering Agriminds...

**SCAN HERE
FOR REGISTRATION**



SCAN HERE



+91 7499177133
+91 7879221505



www.agmatrix.in



[Agmatrix_careers](https://www.facebook.com/Agmatrix_careers)